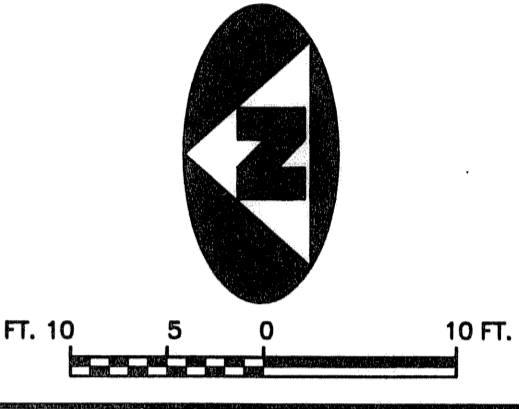
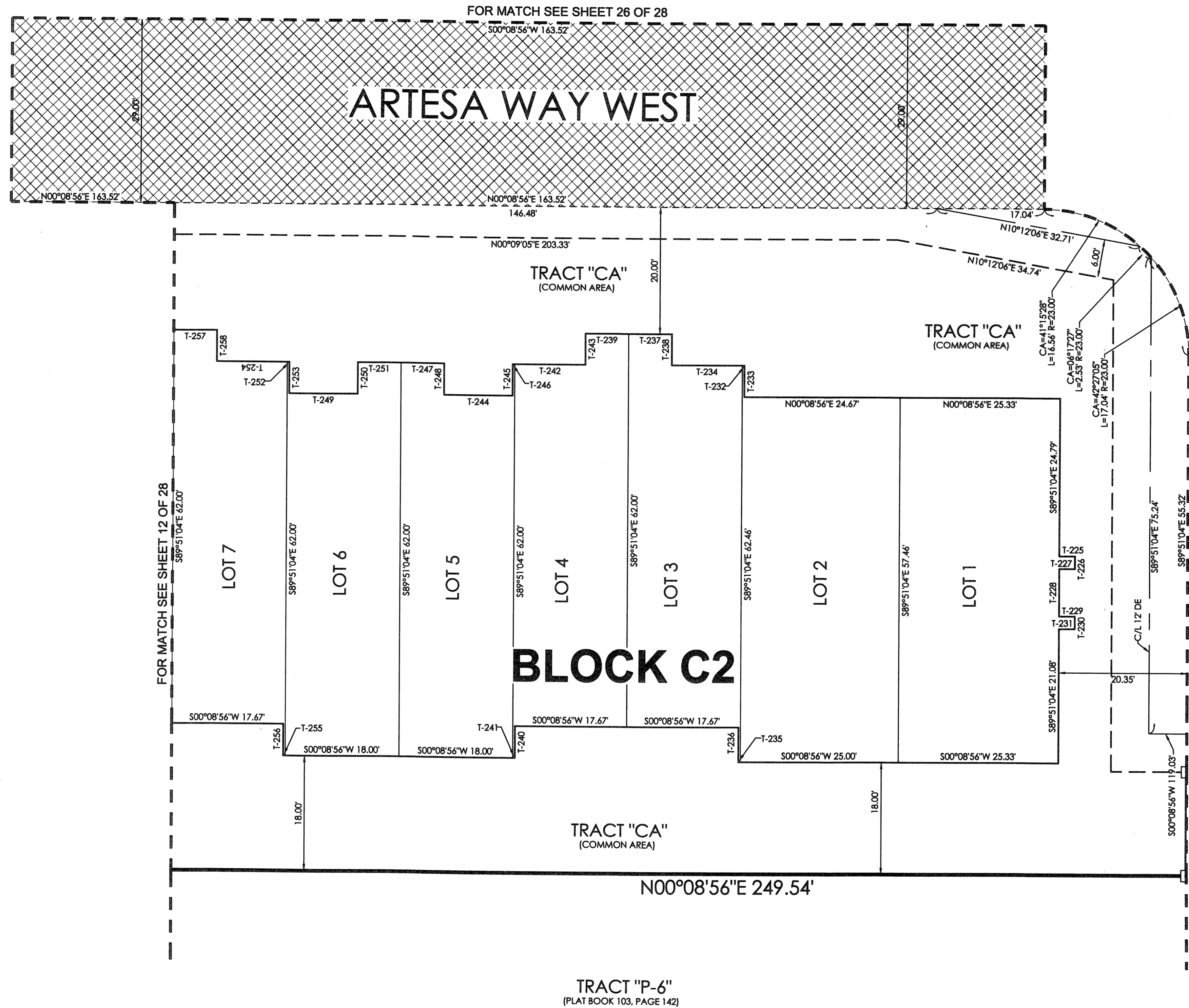


CIELO TOWNHOMES AT THE SHOPS OF DONALD ROSS

BEING A REPLAT OF TRACT "R", THE SHOPS OF DONALD ROSS REPLAT OF TRACT "A", RECORDED IN PLAT BOOK 103, PAGE 142, PUBLIC RECORDS, PALM BEACH COUNTY, FLORIDA AND LYING IN THE NORTHWEST ONE-QUARTER OF SECTION 25, TOWNSHIP 41 SOUTH, RANGE 42 EAST, CITY OF PALM BEACH GARDENS, PALM BEACH COUNTY, FLORIDA.

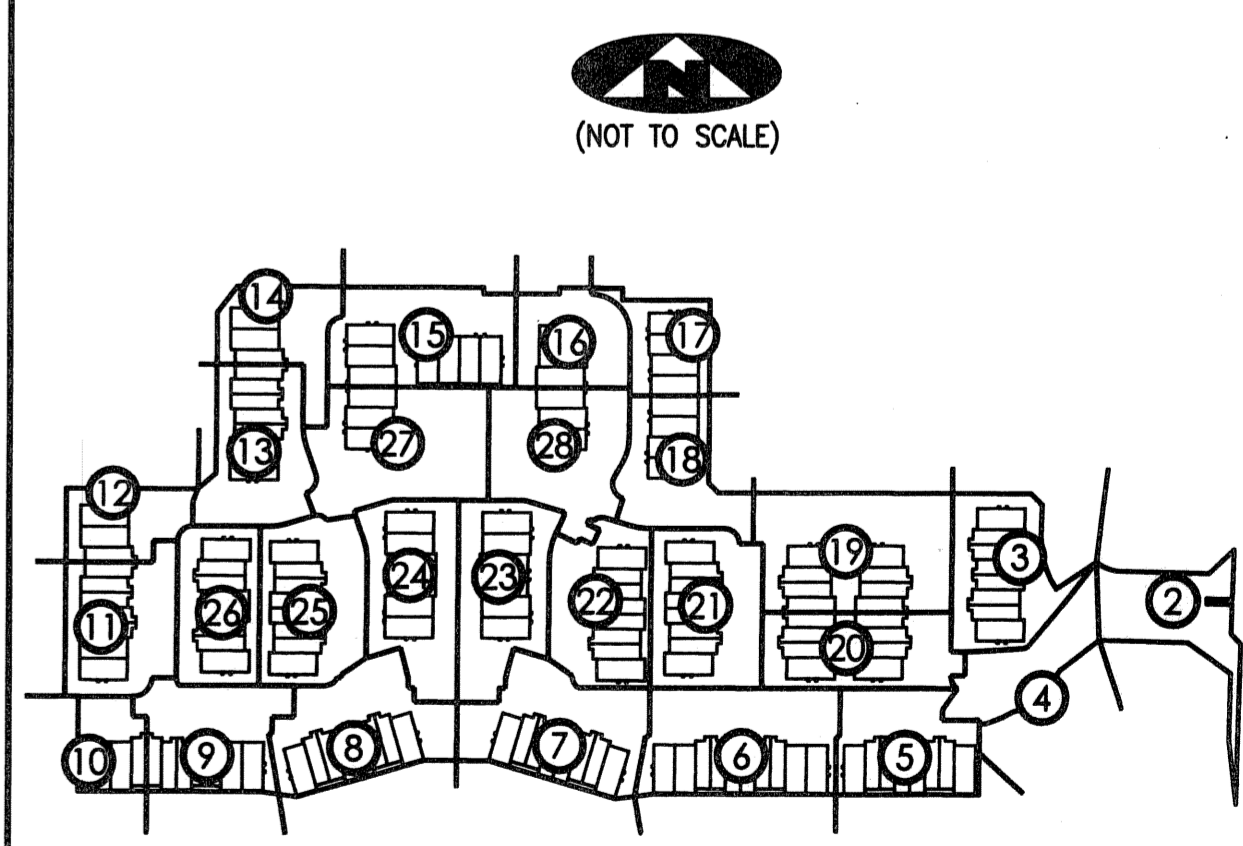
167



TANGENT TABLE

T-225	N00°08'56"E 2.50'
T-226	S89°51'04"E 2.00'
T-227	S00°08'56"W 2.50'
T-228	S89°51'04"E 7.58'
T-229	N00°08'56"E 2.50'
T-230	S89°51'04"E 2.00'
T-231	S00°08'56"W 2.50'
T-232	N00°08'56"E 0.33'
T-233	S89°51'04"E 5.00'
T-234	N00°08'56"E 11.11'
T-235	S00°08'56"W 0.33'
T-236	N89°51'04"W 5.46'
T-237	N00°08'56"E 6.83'
T-238	S89°51'04"E 5.00'
T-239	N00°08'56"E 6.83'
T-240	S89°51'04"E 5.00'
T-241	S00°08'56"W 0.33'
T-242	N00°08'56"E 11.17'
T-243	N89°51'04"W 5.00'
T-244	N00°08'56"E 10.83'
T-245	N89°51'04"W 5.00'
T-246	N00°08'56"E 0.33'
T-247	N00°08'56"E 6.83'
T-248	S89°51'04"E 5.00'
T-249	N00°08'56"E 10.83'
T-250	N89°51'04"W 5.00'
T-251	N00°08'56"E 6.83'
T-252	N00°08'56"E 0.33'
T-253	S89°51'04"E 5.00'
T-254	N00°08'56"E 11.17'
T-255	S00°08'56"W 0.33'
T-256	N89°51'04"W 5.00'
T-257	N00°08'56"E 6.83'
T-258	S89°51'04"E 5.00'

SHEET INDEX



1 = DENOTES SHEET NUMBER OF 28

LEGEND

(R)	DENOTES A RADIAL LINE	R	DENOTES RADIUS DISTANCE	⊙	DENOTES A SET PERMANENT CONTROL POINT (LB 7344)	□	DENOTES A SET PERMANENT REFERENCE MONUMENT (LB 7344)
C/L	DENOTES A CENTERLINE	L	DENOTES ARC LENGTH DISTANCE	■	DENOTES A FOUND PERMANENT REFERENCE MONUMENT (LB 2171)		
DE	DENOTES DRAINAGE EASEMENT	CA	DENOTES CENTRAL ANGLE				
SUA	DENOTES SEACOAST UTILITY AUTHORITY	LCB	DENOTES LONG CHORD BEARING				
LS	DENOTES LIFT STATION EASEMENT	CHD	DENOTES CHORD DISTANCE				
EAE	DENOTES EMERGENCY ACCESS EASEMENT	ORB	DENOTES OFFICIAL RECORDS BOOK	▨	DENOTES A SEACOAST UTILITY EASEMENT (ORB 17773, PAGE 469)	▩	DENOTES AN INGRESS, EGRESS, DRAINAGE AND UTILITY EASEMENT (PB 103, PAGE 142)
		PB	DENOTES PLAT BOOK				

SURVEYOR'S NOTES

1. THE BASE BEARING, AS SHOWN HEREON, IS S01°22'09"W ALONG THE EAST LINE OF TRACT "R", THE SHOPS OF DONALD ROSS REPLAT OF TRACT "A", RECORDED IN PLAT BOOK 103, PAGE 142.
2. IN THOSE INSTANCES WHERE UTILITY OR DRAINAGE STRUCTURES ARE CONSTRUCTED IN CONFLICT WITH THE PLATTED PERMANENT CONTROL POINT POSITION STRADDLERS MONUMENTED AS PERMANENT CONTROL POINTS WILL BE SET TO REFERENCE THE PLATTED POSITION.
3. LINES THAT INTERSECT CURVES ARE NOT RADIAL UNLESS OTHERWISE NOTED.
4. THIS INSTRUMENT WAS PREPARED BY WM. R. VAN CAMPEN, P.S.M. NO. 2424, IN AND FOR THE OFFICES OF ASSOCIATED LAND SURVEYORS, INC., 4152 WEST BLUE HERON BOULEVARD, SUITE 121, RIVIERA BEACH, FLORIDA, 33404

FILE: CIELOPLOT	
FB:	WO.NO.: P238
SCALE: 1"=10'	DATE: 12/25/2004
DWN: KVC	SHEET 11 OF 28

ASSOCIATED LAND SURVEYORS, INC.
 4152 W. BLUE HERON BOULEVARD—SUITE 121
 RIVIERA BEACH, FLORIDA 33404 LB NO. 7344
 PHONE: (561) 848-2102 FAX: (561) 844-9659 EMAIL: ALLSURVEY@AOL.COM